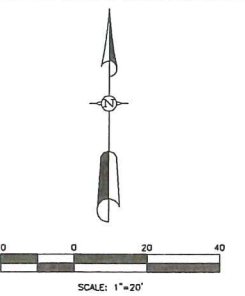
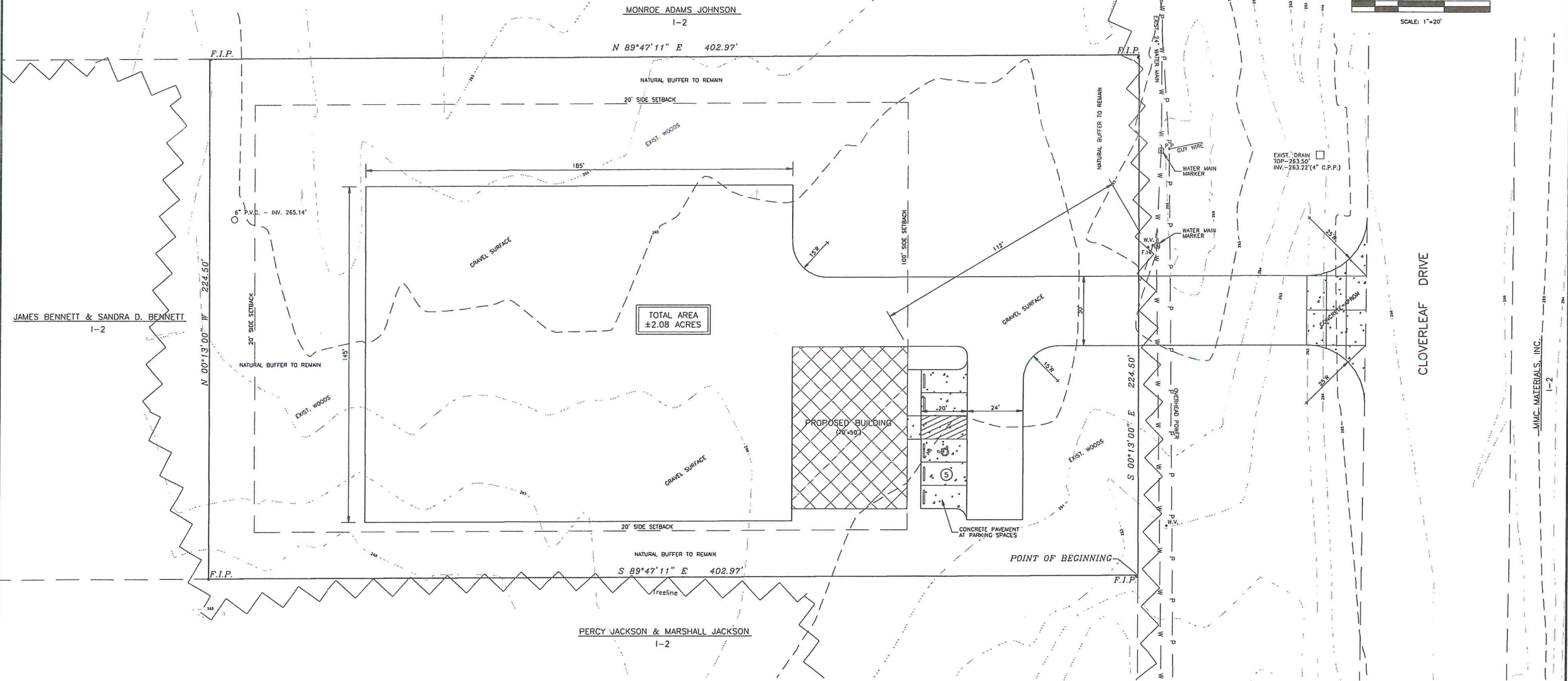


- NOTES:
1. THE TOTAL AREA OF THIS DEVELOPMENT IS 2.08 AC.
 2. BUILDING SETBACKS:
FRONT - 100'
REAR - 20'
SIDE - 20'
 3. THIS BUILDING WILL BE UTILIZED AS A CONTRACTOR'S OFFICE.
 4. PARKING SPACES PROVIDED - 5 SPACES
 5. BUILDABLE AREA PROVIDED - 4% OF GROSS LOT AREA.
 6. THIS PROPERTY IS ZONED I-2 IN MADISON COUNTY.
 7. THIS PROPERTY IS LOCATED IN "ZONE X", AS SHOWN ON F.I.R.M. MAP NO. 28089C0415, WITH AN EFFECTIVE DATE OF MARCH 17, 2010.

8. ALL CONSTRUCTION WILL BE IN ACCORDANCE WITH MADISON COUNTY SPECIFICATIONS.
9. DOMESTIC WATER SERVICE AND FIRE PROTECTION WILL BE PROVIDED BY BEAR CREEK WATER ASSOCIATION. SEWER SERVICE WILL BE PROVIDED BY CANTON MUNICIPAL UTILITIES.
10. ALL RADIIUSES AND DIMENSIONS ARE MEASURED TO THE EDGE PAVEMENT OR GRAVEL UNLESS NOTED OTHERWISE.
11. UNDERGROUND UTILITIES WERE LOCATED BY FIELD OBSERVATION AND BY THE FOLLOWING MISSISSIPPI 811 LOCATE REQUEST: #19031209320375
DATE CALLED: MARCH 12, 2019
UTILITIES NOTIFIED:
MS0013 TELEPAK DBA C-SPIRE FIBER
MS0082 DENBURY ONSHORE TRANSMISSION BRANDON
MS3000 AT&T DISTRIBUTION
MS3055 CANTON MUNICIPAL UTILITIES
MS9835 PEARL RIVER VALLEY WATER MMEA
MS9862 BEAR CREEK ASSOCIATION



Revisions				
#	Date	By	App'd	Notes

Project No.	M-2675	Designed by	R.C.M.
Date	3-18-19	Checked by	R.C.M.
Scale	SEE ABOVE	Drawn by	R.C.M.

**SAM BRYSON BUILDING
MADISON COUNTY, MS**

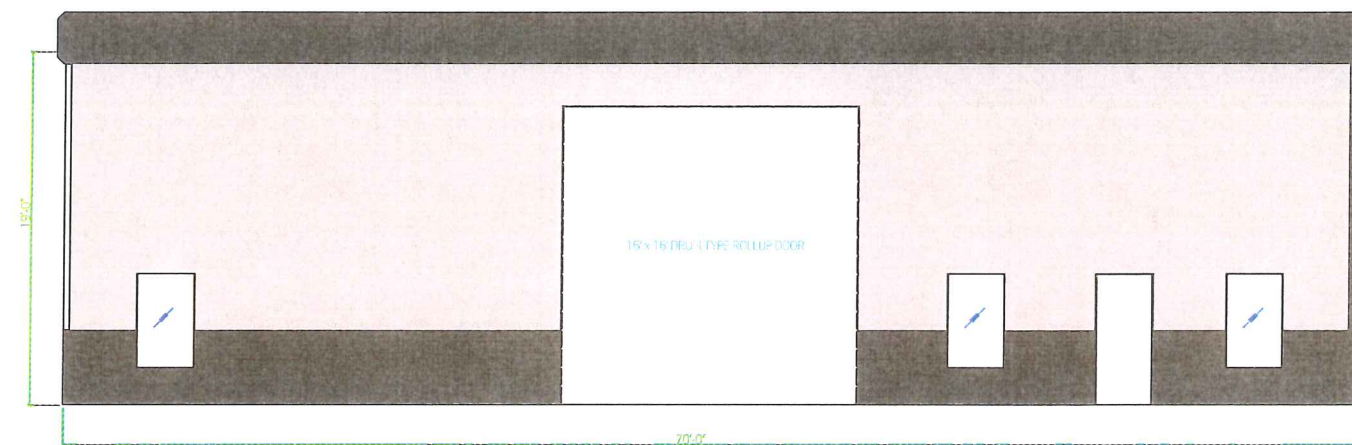
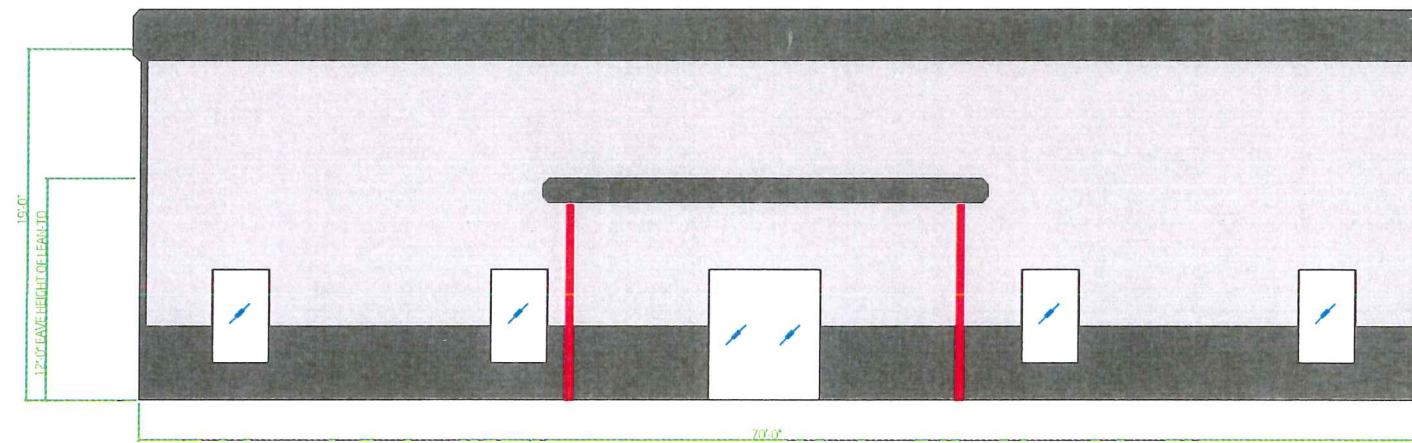
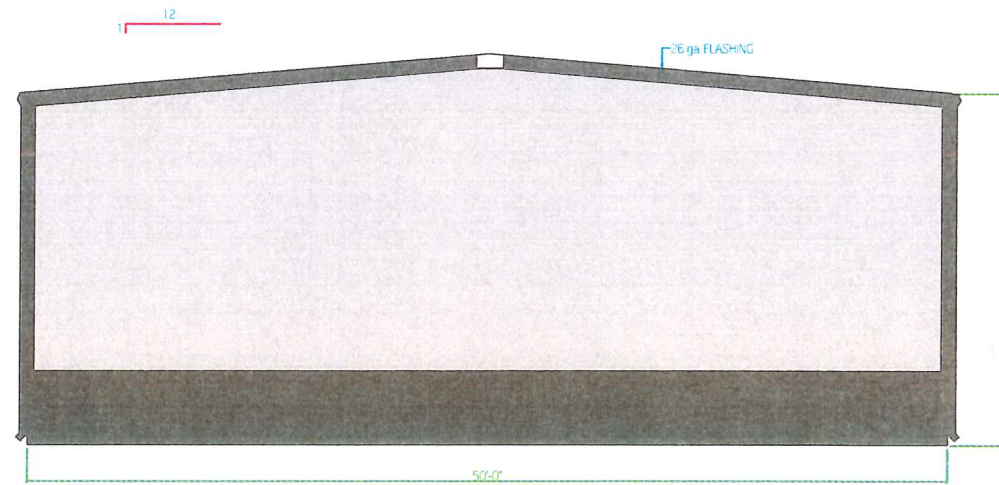
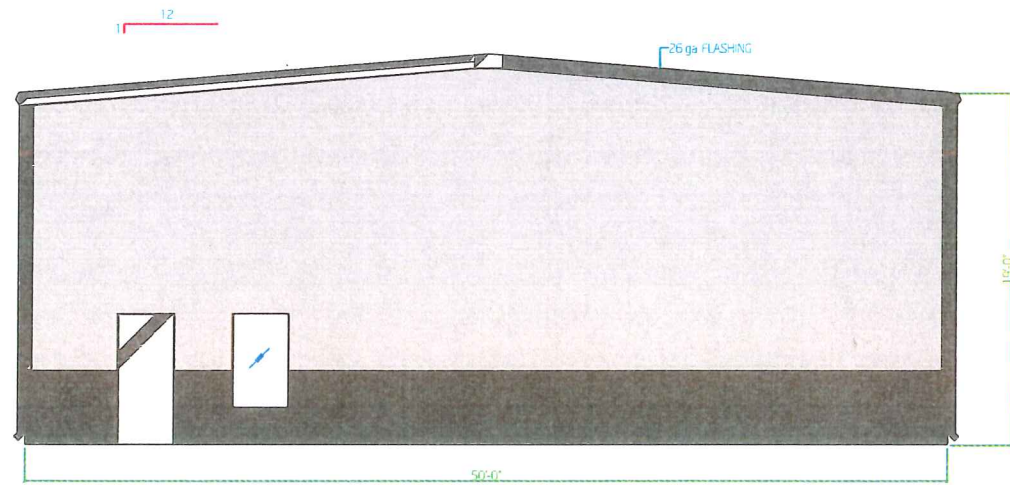


M-MASTER & ASSOCIATES, INC.
CIVIL ENGINEERS & LAND SURVEYORS

212 WATERFORD SQUARE
SUITE 300
MADISON, MS 39110
601.605.1090

**NOT FOR
CONSTRUCTION**

SITE PLAN
1



Majestic Metals
P.O. BOX 12267 JACKSONVILLE, FL 32212





SYSTEMS FOR THE METAL BUILDING INDUSTRY

SAMUEL BRYSON
 GUCKSTADT, MS

DR BY	KW	QA BY	DR12
			P2018-1121
PLT SCALE	DATE	DRAWING NO.	
1/4" = 1'-0"	4-9-2019	P2018-1121-03	



Madison County Web Map

Parcels		PRIVATE	CITY
Roads		Zoning	 I-2
		A-1	

